

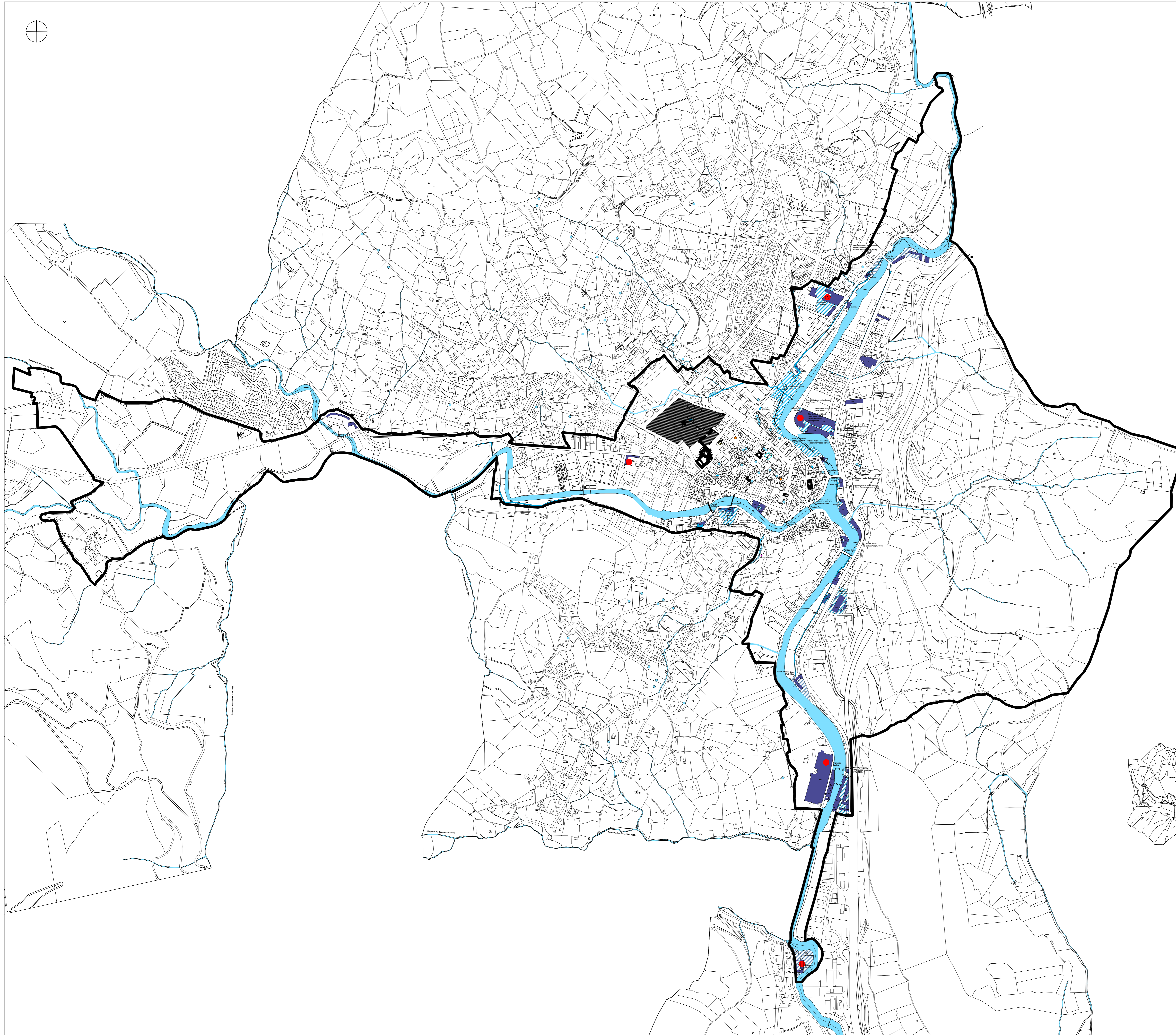
AVAP ANNEXE NON REGLEMENTAIRE










Plan de synthèse du
patrimoine industriel et
hydraulique

Approbation: janvier 2020

Echelle 1/2000ème
Antoine BRUGUEROLLE
architecte
5, rue Segur
30000 NIMES

Date fond cadastral: 2006



-  Limite de AVAP
-  Cours d'eau
-  Usines, manufactures
-  Site des usines, ou manufactures
-  Cheminées d'usine
-  Puits existant
-  Fontaine disparue
-  Monument Historique
-  Terrain (sol) classé Monument Historique

0 100m 250m 500m

Echelle 1/5000ème

